



PowerOLAP® V11

TECHNICAL SPECIFICATIONS

PowerOLAP® Version 11

Greater Power AND User Control—PowerOLAP® Version 11 meets your highest performance expectations and gives you ownership of a solution that will enable you take your business forward, to greater performance and profitability.

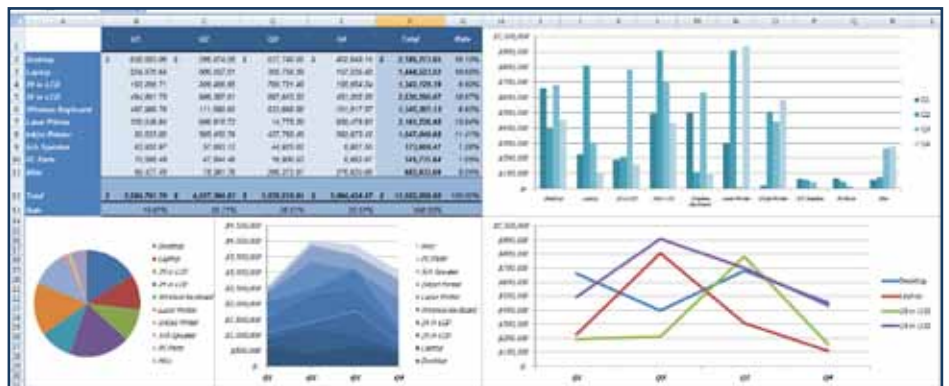
All that and PowerOLAP® Web, too!

Version 11 features PowerOLAP® Web, an instant and simple way to publish Excel reports to the Web. Live POWeb reports dynamically connect to PowerOLAP®—just as Excel does—providing no-footprint budgeting, planning, forecasting and reporting. Create a report the way you want it to appear, then save it. Open the file, and it convert the xls to html instantly, maintaining calculations, formatting and graphics. With POWeb you are able to update budgets and plans, print reports, and even convert xls to pdf online.



SPEED YOUR PLANNING, REPORTING AND ANALYSIS RESULTS VIA THE FOLLOWING PERFORMANCE ENHANCEMENTS:

- Save Cache and Save Dependencies**
 PowerOLAP, as the premier in-memory OLAP solution, already included the capability to cache data within Cubes. Now, Saving Cache ensures that, if a PowerOLAP Server-based database is closed, then upon restart the cached calculation results will be available MUCH faster.
 In the same way, Saving Dependencies ensures MUCH faster data results appearing after the restart of the PowerOLAP Server.
- Bandwidth Optimizations**
 The PowerOLAP Client – Server environment is optimized to begin with: calculations, meta data modeling, indeed the most intensive data activity that impacts on performance is already handled by the Server. Now Version11 allows Bandwidth Optimizations, which are adjustable according to need—for example, via local or Internet connections—so that Client – Server communications can be handled even more efficiently.
- Improved Cueing**
 In a multi-user environment—in particular, one which involves users “writing back” to, for example, a budget or forecast solution—users might have had to wait to see results while their colleagues were also active in the PowerOLAP model. With Improved Cueing, a user will be “released from the cue” of activities at the earliest possible moment, and so can return to work without waiting for the refresh of the entire model’s calculation results.
- Enhanced User-Proofing**
 In any multi-user environment, there is a chance that one or multiple users’ actions can unintentionally disrupt or even end processes. With Enhanced User-Proofing, PowerOLAP can identify user actions that would otherwise impede the overall operation of multi-user environment, thus ensuring smooth ongoing operability and the rock-solid stability you expect of your key business processes.



NOW THAT'S INTELLIGENT.



PowerOLAP® Version 11 gives greater control over user processes

- **Execute PowerOLAP® Jobs and Scheduler tasks from Excel**

Version11 makes it possible to define and execute many PowerOLAP®-specific jobs (for example, Update Cube via OLAP Exchange) from an Excel workbook—tasks which previously required accessing the PowerOLAP® Modeler front end. Once configured, a simple button can execute these tasks. As well, any tasks handled by the PowerOLAP® Scheduler—which can include PowerOLAP® and Windows tasks (for example, Send Report via Email) —can also be executed from Excel, the most efficient and direct way to accomplish so many things that you use PowerOLAP® for.

- **View Formulas from Excel**

This outstanding feature allows a user to see precisely how a data calculation is derived from the underlying PowerOLAP® formula logic—in single cell or comprehensively, across a broad range of spreadsheet cells. It is a powerful tool for analyzing PowerOLAP® database design and for diagnosing formula results.

- **Rename Member (Alias, Properties) Function**

You can now re-design, from a generic application, all the specifics that define your company, by renaming directly from Excel your Departments, Locations, Projects, Staff, etc. All this can be done from a spreadsheet interface. You can make changes to an existing model of your business with a few keystrokes. There is no need to access the PowerOLAP® Modeler.

NOTE: User Privileges are required to utilize this capability.

- **OLAPPaste Enablement for Bulk Paste Processing**

This Version11 feature provides an enormous boost to users utilizing the OLAPPaste function, which allows for an Excel data point to be copy-pasted into a spreadsheet cell that communicates with PowerOLAP®. Bulk copy-paste, with much-enhanced performance, will speed your time to results, which is what you count on when using PowerOLAP® and Excel.

- **Cancel CALC Feature**

When entering data in Excel, a user is put into a cue, and there may be a wait for results to appear—a wait that may keep Excel from responding to other activity. With the Cancel Calc feature, a user can choose to free his or her PC and Excel to perform other activities while the calculation takes place. The user can then return to PowerOLAP® once the data input has been processed.



PowerOLAP® V11 Synchronization Server Enhancements:

In addition to empowering user controls, PowerOLAP® Version 11 has added capabilities on the Server, so you can manage your user-group solutions more efficiently via the following PowerOLAP® Server Control Program Enhancements. Each of the following provides greater visibility on and control of users working on a Server-based file, as well as the better, faster results you aim for from PowerOLAP®:

- **User-Specific Monitoring**

Allows an Admin on the Server to view instances of users connected to specific databases, as well as the activities on the database(s).

- **User-Specific and Database-Specific Calc Canceling**

Allows an Admin to cancel a calculation at the level of an individual user or for a specified database, and as a consequence not disturb other users' activities. Additionally, the time to executing a cancellation has been significantly improved.

- **Auto Restore of Data**

Ensures that when a Server is restarted, whether automatically or manually, following an unforeseen disruption (e.g., power failure), meta data and fact data will be restored.

- **User Interface Controls for Change Ports for Web Server & TCPIP and Debug Log Enablement**

Both capabilities have been given easy access and control from an Admin UI

PowerOLAP® Version 11 Synchronization Server component now utilizes SQL Server as the database storage mechanism—leveraging the RDBS environment for Load Balancing and Redundancy capabilities as well.

Go to www.paristech.com for more information and to view a demo or call us at +1.215.340.2890

**PARIS Technologies International, Inc.
200 Hyde Park
Doylestown, PA 18902
www.paristech.com
info@paristech.com
+1.215.340.2890**